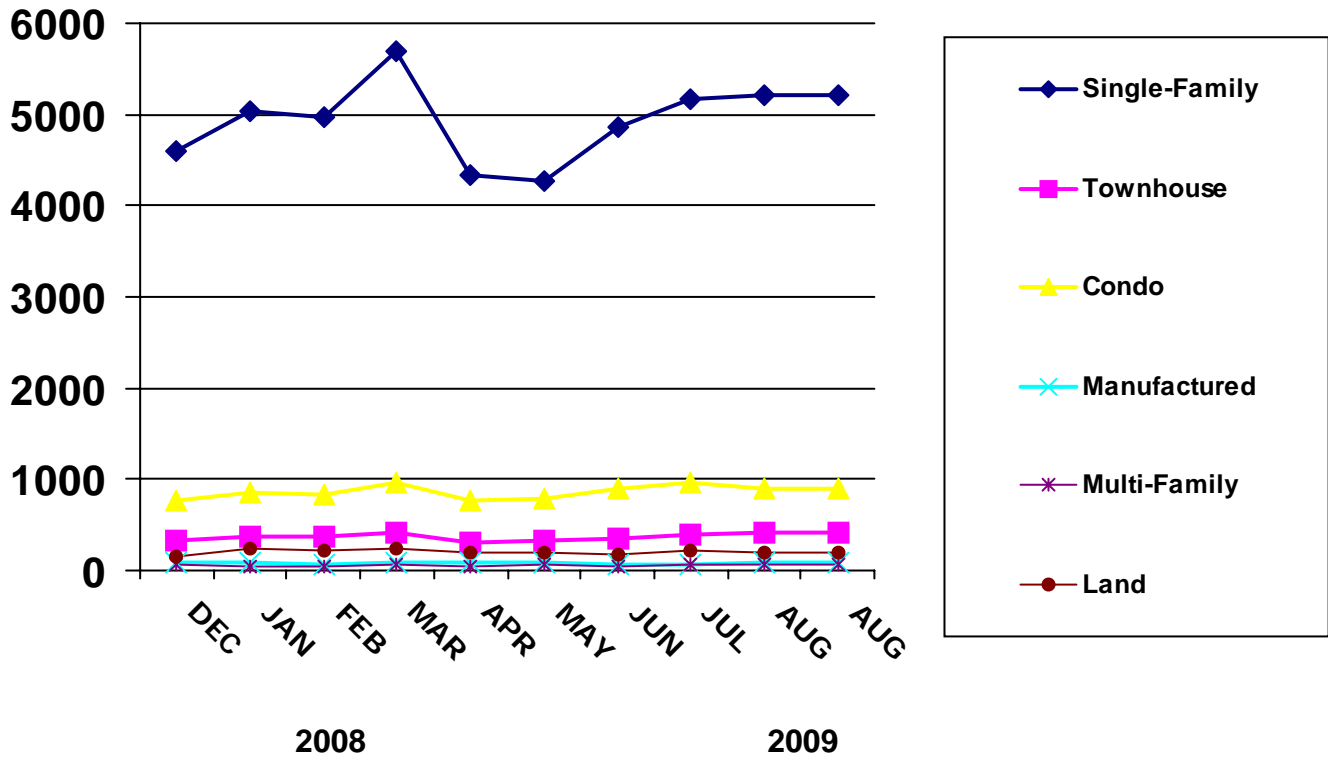




NEW LISTINGS BY MONTH



PROPERTY TYPE	JAN	FEB	MAR	APR	MAY	JUN	JUL	AUG	SEP	OCT	NOV	DEC
2007 - Number of Units												
SINGLE-FAMILY	5826	5198	6141	5568	5776	5500	5738	5798	4754	5210	4106	3421
TOWNHOUSE	468	421	520	472	442	433	447	390	351	377	327	238
CONDO	1040	1025	1083	893	996	842	836	916	821	763	672	488
MANUFACTURED	153	120	144	143	137	120	111	123	91	96	68	47
MULTI-FAMILY	84	75	79	90	108	73	83	79	75	79	59	40
LAND	576	500	497	512	443	414	377	507	414	397	287	231
2008 - Number of Units												
SINGLE-FAMILY	5021	4826	4866	5145	5202	5336	5500	5285	5362	5556	4604	4605
TOWNHOUSE	309	306	366	339	299	330	344	333	350	375	344	325
CONDO	752	662	680	781	766	810	777	790	769	867	697	765
MANUFACTURED	99	103	101	96	97	84	96	81	97	93	69	84
MULTI-FAMILY	66	53	55	44	54	60	50	46	55	57	49	57
LAND	450	376	322	353	339	296	303	295	323	280	185	147
2009 - Number of Units												
SINGLE-FAMILY	5040	4975	5704	4334	4261	4859	5173	5219	0	0	0	0
TOWNHOUSE	377	378	414	315	327	354	401	410	0	0	0	0
CONDO	848	835	967	771	785	888	960	891	0	0	0	0
MANUFACTURED	94	72	82	79	86	67	71	87	0	0	0	0
MULTI-FAMILY	40	40	60	33	67	48	56	58	0	0	0	0
LAND	248	214	239	196	188	171	214	205	0	0	0	0



The data is deemed reliable but not guaranteed and is Subject to errors, omissions or revisions and is not warranted.