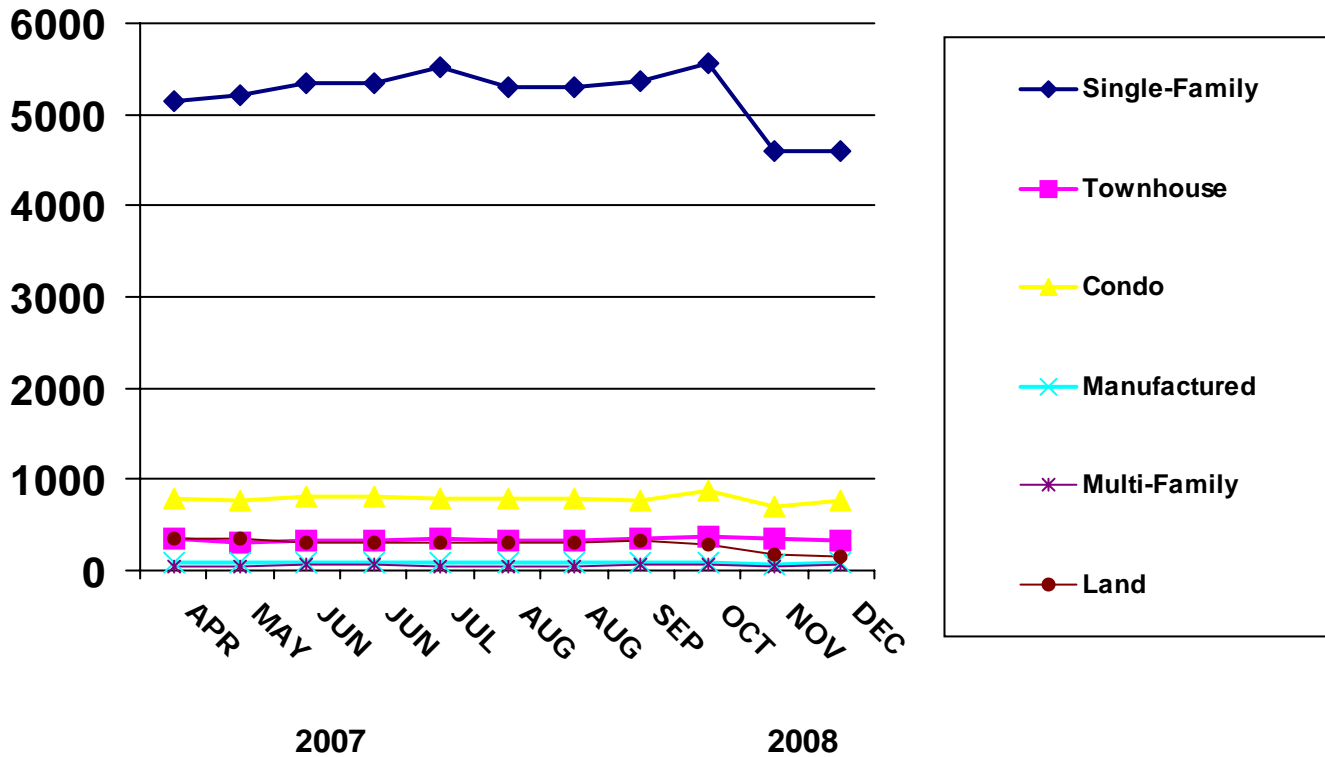




NEW LISTINGS BY MONTH



PROPERTY TYPE	JAN	FEB	MAR	APR	MAY	JUN	JUL	AUG	SEP	OCT	NOV	DEC
2006 - Number of Units												
SINGLE-FAMILY	5121	4999	6030	5927	6312	6096	5534	5877	5287	5142	4057	3219
TOWNHOUSE	419	390	514	488	542	497	497	481	466	411	401	312
CONDO	731	699	867	829	931	1022	983	995	829	876	708	669
MANUFACTURED	115	104	117	122	137	142	144	175	122	120	137	78
MULTI-FAMILY	64	59	80	66	115	71	81	111	84	90	58	44
LAND	529	490	567	520	573	526	471	574	526	464	429	375
2007 - Number of Units												
SINGLE-FAMILY	5826	5198	6141	5568	5778	5500	5740	5801	4759	5213	4112	3422
TOWNHOUSE	468	421	520	472	442	433	447	390	351	378	327	238
CONDO	1040	1025	1083	893	996	842	836	917	822	764	673	488
MANUFACTURED	153	120	144	143	137	120	111	123	91	96	68	47
MULTI-FAMILY	84	75	79	90	108	73	83	79	75	79	59	40
LAND	577	500	497	512	444	414	377	508	414	398	288	231
2008 - Number of Units												
SINGLE-FAMILY	5028	4831	4879	5155	5211	5347	5509	5290	5367	5560	4609	4609
TOWNHOUSE	310	306	366	340	299	330	343	335	351	376	344	328
CONDO	753	664	682	781	768	811	781	790	769	866	699	768
MANUFACTURED	99	104	101	96	96	84	96	81	97	92	69	84
MULTI-FAMILY	66	53	55	44	54	60	50	46	55	57	49	57
LAND	450	377	322	356	340	296	304	296	325	282	185	147

