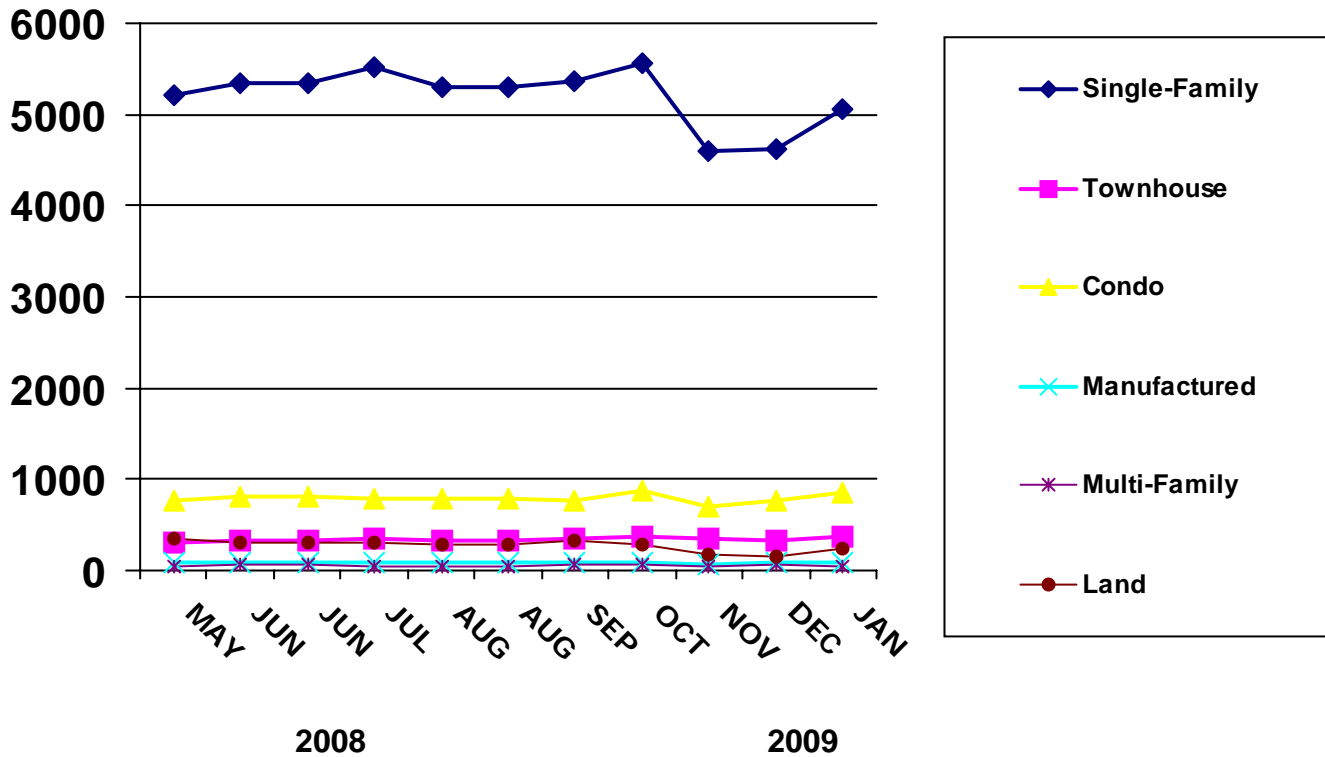




# NEW LISTINGS BY MONTH



PROPERTY TYPE	JAN	FEB	MAR	APR	MAY	JUN	JUL	AUG	SEP	OCT	NOV	DEC
<b>2007 - Number of Units</b>												
SINGLE-FAMILY	5826	5198	6141	5568	5778	5500	5739	5799	4758	5213	4110	3422
TOWNHOUSE	468	421	520	472	442	433	447	390	351	378	327	238
CONDO	1040	1025	1083	893	996	842	836	917	822	763	673	488
MANUFACTURED	153	120	144	143	137	120	111	123	91	96	68	47
MULTI-FAMILY	84	75	79	90	108	73	83	79	75	79	59	40
LAND	576	500	497	512	443	414	377	508	414	397	288	231
<b>2008 - Number of Units</b>												
SINGLE-FAMILY	5027	4831	4879	5155	5211	5347	5509	5290	5366	5560	4609	4611
TOWNHOUSE	310	306	366	340	299	330	343	335	351	375	344	326
CONDO	753	664	682	781	768	811	781	790	769	866	699	768
MANUFACTURED	99	104	101	96	96	84	95	81	97	93	69	84
MULTI-FAMILY	66	53	55	44	54	60	50	46	55	57	49	57
LAND	450	377	322	354	340	296	303	295	323	280	185	147
<b>2009 - Number of Units</b>												
SINGLE-FAMILY	5050	0	0	0	0	0	0	0	0	0	0	0
TOWNHOUSE	377	0	0	0	0	0	0	0	0	0	0	0
CONDO	848	0	0	0	0	0	0	0	0	0	0	0
MANUFACTURED	92	0	0	0	0	0	0	0	0	0	0	0
MULTI-FAMILY	40	0	0	0	0	0	0	0	0	0	0	0
LAND	248	0	0	0	0	0	0	0	0	0	0	0

