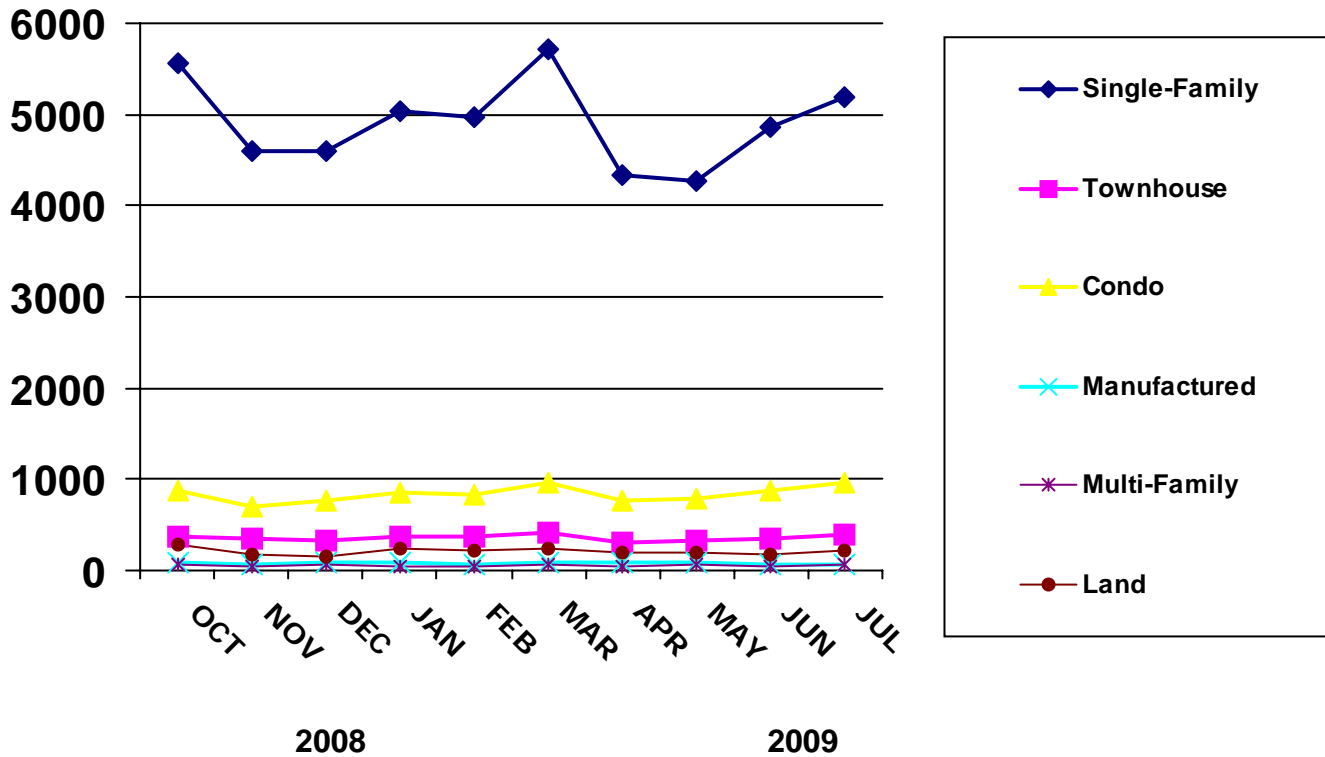




NEW LISTINGS BY MONTH



PROPERTY TYPE	JAN	FEB	MAR	APR	MAY	JUN	JUL	AUG	SEP	OCT	NOV	DEC
2007 - Number of Units												
SINGLE-FAMILY	5826	5198	6141	5568	5776	5500	5738	5798	4754	5210	4107	3421
TOWNHOUSE	468	421	520	472	442	433	447	390	351	377	327	238
CONDO	1040	1025	1083	893	996	842	836	916	822	763	673	488
MANUFACTURED	153	120	144	143	137	120	111	123	91	96	68	47
MULTI-FAMILY	84	75	79	90	108	73	83	79	75	79	59	40
LAND	576	500	497	512	443	414	377	507	414	397	287	231
2008 - Number of Units												
SINGLE-FAMILY	5021	4826	4869	5146	5201	5337	5502	5289	5363	5558	4606	4609
TOWNHOUSE	309	306	366	340	299	330	344	334	351	375	344	325
CONDO	752	664	680	781	766	810	779	791	769	866	698	766
MANUFACTURED	99	103	101	96	97	84	96	81	97	93	69	84
MULTI-FAMILY	66	53	55	44	54	60	50	46	55	57	49	57
LAND	450	376	322	353	339	296	303	295	323	280	185	147
2009 - Number of Units												
SINGLE-FAMILY	5044	4979	5712	4346	4269	4870	5188	0	0	0	0	0
TOWNHOUSE	377	378	416	315	328	361	401	0	0	0	0	0
CONDO	848	836	969	775	787	885	963	0	0	0	0	0
MANUFACTURED	94	72	82	80	87	68	73	0	0	0	0	0
MULTI-FAMILY	40	40	61	34	67	48	57	0	0	0	0	0
LAND	248	214	239	196	188	171	214	0	0	0	0	0

