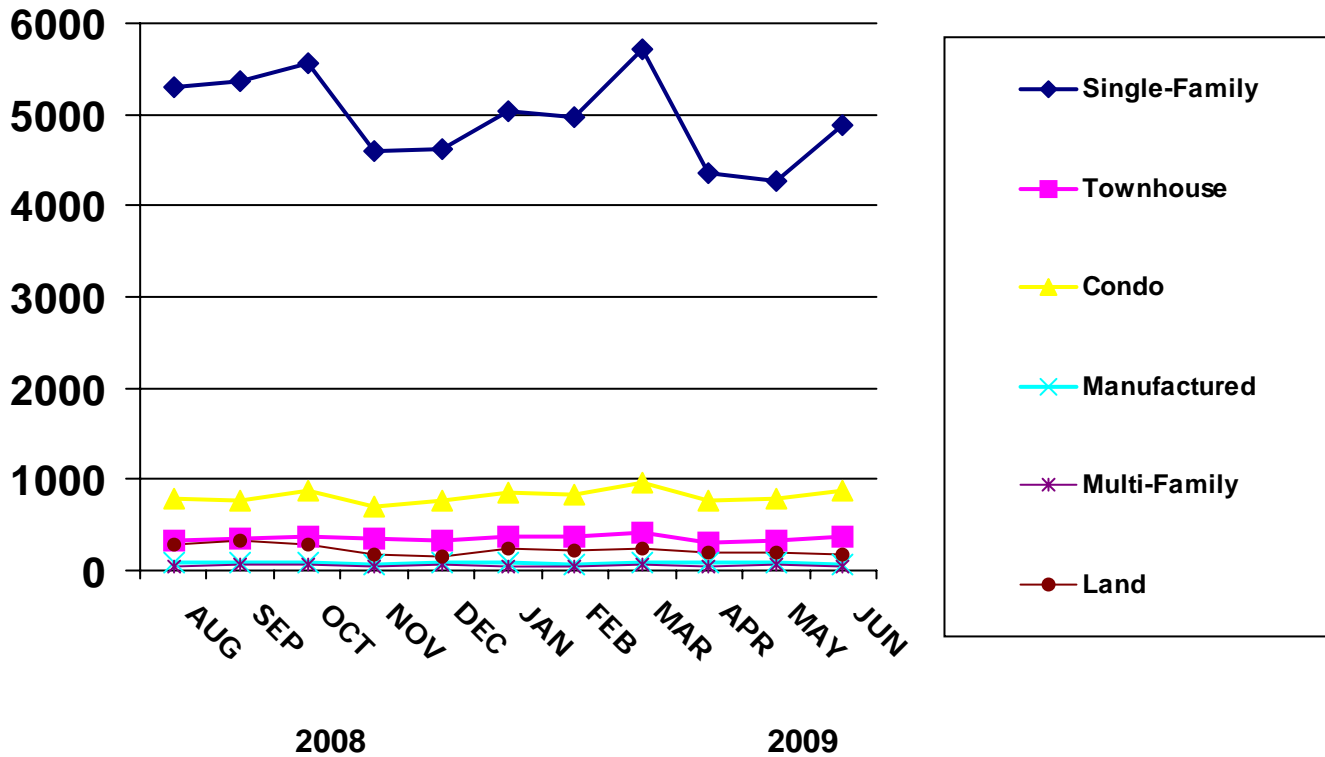




NEW LISTINGS BY MONTH



PROPERTY TYPE	JAN	FEB	MAR	APR	MAY	JUN	JUL	AUG	SEP	OCT	NOV	DEC
2007 - Number of Units												
SINGLE-FAMILY	5826	5198	6141	5568	5776	5500	5739	5798	4754	5210	4107	3421
TOWNHOUSE	468	421	520	472	442	433	447	390	351	377	327	238
CONDO	1040	1025	1083	893	996	842	836	916	822	763	673	488
MANUFACTURED	153	120	144	143	137	120	111	123	91	96	68	47
MULTI-FAMILY	84	75	79	90	108	73	83	79	75	79	59	40
LAND	576	500	497	512	443	414	377	508	414	397	287	231
2008 - Number of Units												
SINGLE-FAMILY	5022	4826	4869	5147	5204	5344	5506	5289	5365	5559	4607	4611
TOWNHOUSE	310	306	366	340	299	330	343	334	351	375	344	326
CONDO	752	664	680	781	766	811	780	791	769	866	698	766
MANUFACTURED	99	104	101	96	97	84	96	81	97	93	69	84
MULTI-FAMILY	66	53	55	44	54	60	50	46	55	57	49	57
LAND	450	376	322	353	340	296	303	295	323	280	185	147
2009 - Number of Units												
SINGLE-FAMILY	5046	4981	5714	4353	4273	4875	0	0	0	0	0	0
TOWNHOUSE	377	378	416	315	328	362	0	0	0	0	0	0
CONDO	848	837	970	774	787	885	0	0	0	0	0	0
MANUFACTURED	94	72	83	80	88	68	0	0	0	0	0	0
MULTI-FAMILY	40	40	61	34	67	48	0	0	0	0	0	0
LAND	248	214	239	196	188	171	0	0	0	0	0	0

