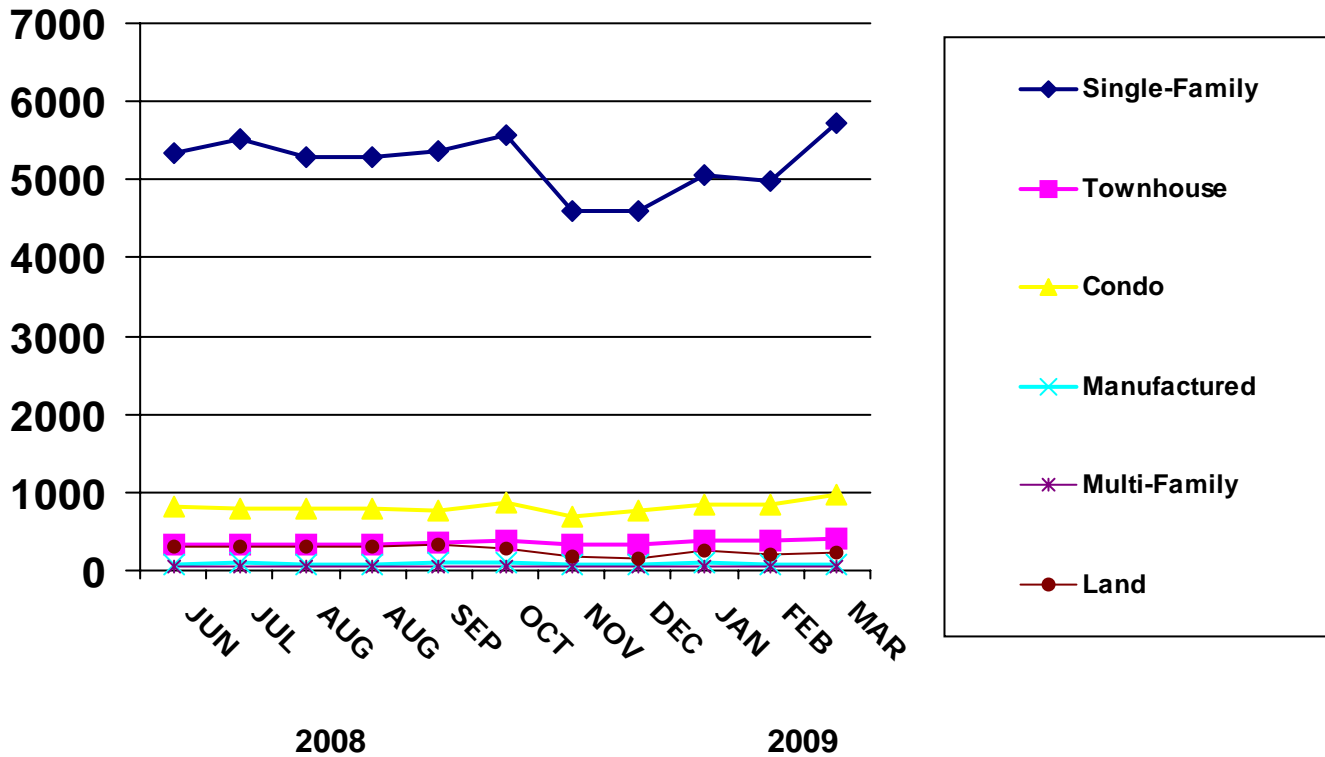




# NEW LISTINGS BY MONTH



PROPERTY TYPE	JAN	FEB	MAR	APR	MAY	JUN	JUL	AUG	SEP	OCT	NOV	DEC
<b>2007 - Number of Units</b>												
SINGLE-FAMILY	5826	5198	6141	5568	5776	5500	5739	5798	4756	5212	4108	3422
TOWNHOUSE	468	421	520	472	442	433	447	390	351	377	327	238
CONDO	1040	1025	1083	893	996	842	836	916	822	763	673	488
MANUFACTURED	153	120	144	143	137	120	111	123	91	96	68	46
MULTI-FAMILY	84	75	79	90	108	73	83	79	75	79	59	40
LAND	576	500	497	512	443	414	377	508	414	397	287	231
<b>2008 - Number of Units</b>												
SINGLE-FAMILY	5024	4827	4876	5152	5209	5347	5508	5290	5366	5560	4608	4611
TOWNHOUSE	310	306	366	340	299	330	343	334	351	375	344	326
CONDO	752	664	681	781	769	811	781	791	769	866	699	767
MANUFACTURED	99	104	101	96	97	84	96	81	97	93	69	84
MULTI-FAMILY	66	53	55	44	54	60	50	46	55	57	49	57
LAND	450	377	322	354	340	296	303	295	323	280	185	147
<b>2009 - Number of Units</b>												
SINGLE-FAMILY	5048	4985	5721	0	0	0	0	0	0	0	0	0
TOWNHOUSE	377	378	416	0	0	0	0	0	0	0	0	0
CONDO	848	837	970	0	0	0	0	0	0	0	0	0
MANUFACTURED	93	71	77	0	0	0	0	0	0	0	0	0
MULTI-FAMILY	40	40	61	0	0	0	0	0	0	0	0	0
LAND	248	214	239	0	0	0	0	0	0	0	0	0

