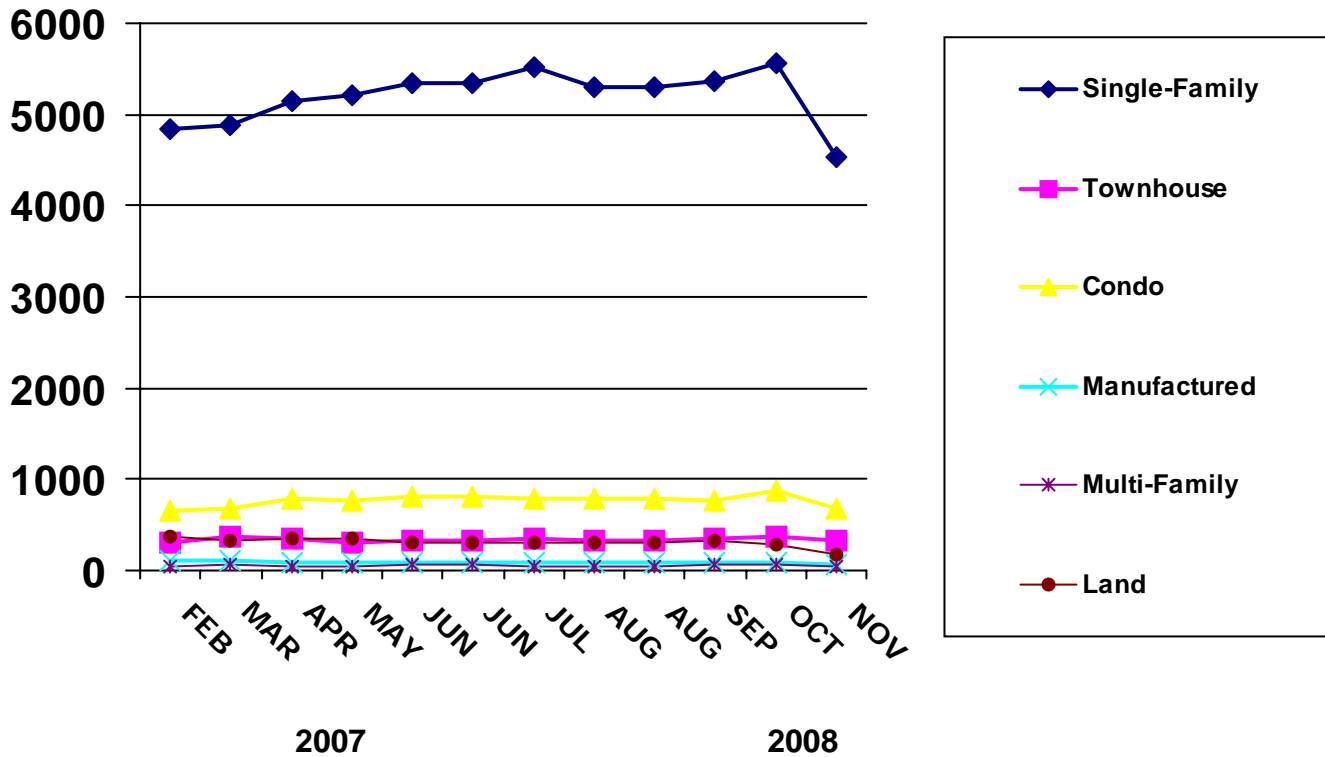




# NEW LISTINGS BY MONTH



PROPERTY TYPE	JAN	FEB	MAR	APR	MAY	JUN	JUL	AUG	SEP	OCT	NOV	DEC
<b>2006 - Number of Units</b>												
SINGLE-FAMILY	5123	4999	6030	5927	6312	6096	5534	5877	5287	5142	4057	3219
TOWNHOUSE	419	390	514	488	542	497	497	481	466	411	401	312
CONDO	733	699	867	829	931	1022	983	995	829	876	708	669
MANUFACTURED	115	104	117	122	137	142	144	175	122	120	137	79
MULTI-FAMILY	64	59	80	66	115	71	81	111	84	90	58	44
LAND	530	490	567	520	573	526	471	575	526	464	430	375
<b>2007 - Number of Units</b>												
SINGLE-FAMILY	5826	5198	6141	5569	5779	5501	5740	5804	4759	5214	4112	3422
TOWNHOUSE	468	421	520	472	442	434	447	390	351	378	327	238
CONDO	1040	1025	1083	893	996	842	836	917	822	764	673	488
MANUFACTURED	153	120	144	143	139	122	111	123	91	96	68	48
MULTI-FAMILY	84	75	79	90	108	73	83	79	75	80	59	40
LAND	578	500	497	512	445	415	377	508	414	398	289	231
<b>2008 - Number of Units</b>												
SINGLE-FAMILY	5029	4831	4880	5155	5212	5351	5513	5291	5370	5565	4543	0
TOWNHOUSE	310	306	366	340	299	330	343	335	351	377	339	0
CONDO	753	664	682	781	769	811	781	790	769	866	684	0
MANUFACTURED	99	104	101	96	96	84	95	81	97	91	66	0
MULTI-FAMILY	66	53	55	44	54	60	50	46	55	57	47	0
LAND	452	377	322	357	347	297	307	296	325	282	185	0

