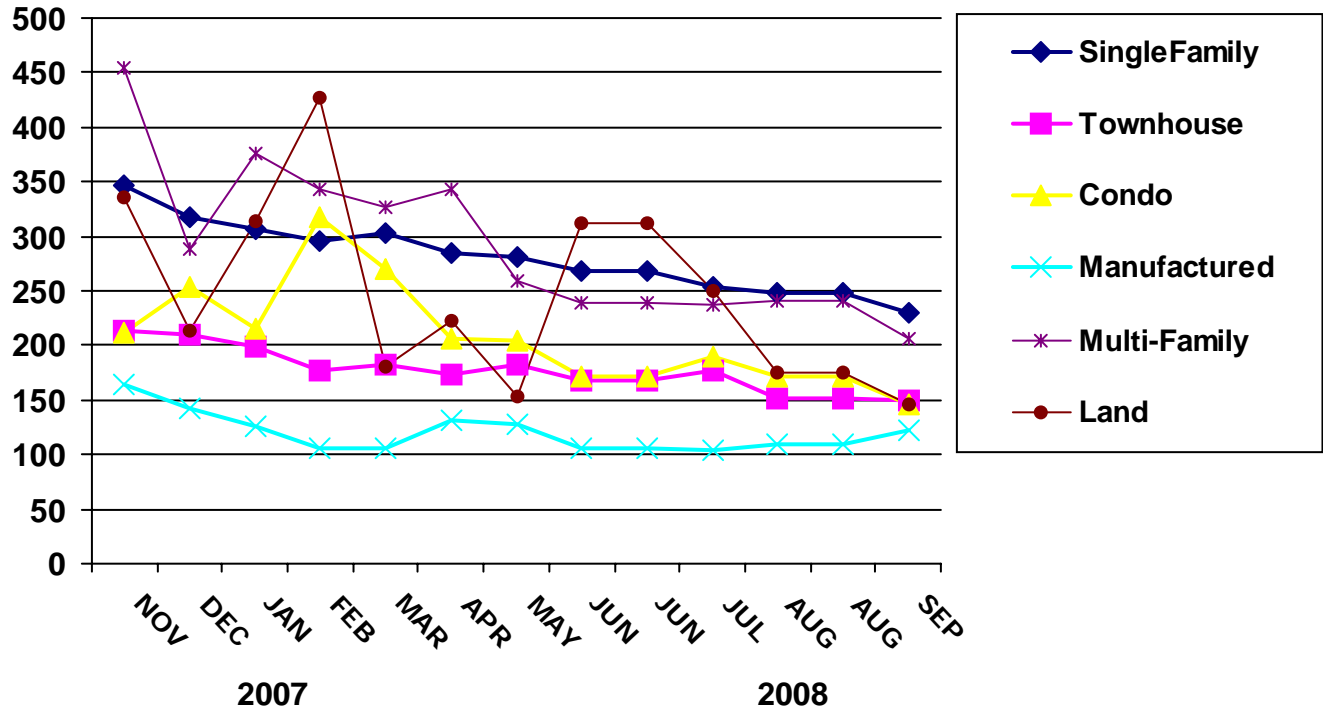




# AVERAGE SALE PRICE BY MONTH



PROPERTY TYPE	JAN	FEB	MAR	APR	MAY	JUN	JUL	AUG	SEP	OCT	NOV	DEC
	2006 (in \$1,000's)											
SINGLE-FAMILY	379	376	375	366	372	383	373	368	380	369	378	374
TOWNHOUSE	232	218	235	233	228	239	237	234	229	225	233	224
CONDO	208	211	219	209	212	213	205	260	216	216	208	237
MANUFACTURED	175	155	144	161	168	165	150	161	165	163	154	150
MULTI-FAMILY	408	572	387	346	427	373	402	399	408	401	383	335
LAND	313	301	351	235	306	272	326	299	312	183	416	187
	2007 (in \$1,000's)											
SINGLE-FAMILY	373	379	379	387	389	377	375	381	351	373	347	318
TOWNHOUSE	224	239	233	245	227	224	223	216	202	210	214	210
CONDO	246	256	235	271	255	230	235	232	228	239	211	253
MANUFACTURED	158	135	146	140	160	147	137	158	145	117	165	142
MULTI-FAMILY	345	358	409	459	410	393	387	387	425	408	455	289
LAND	277	287	291	336	307	344	488	350	329	265	336	213
	2008 (in \$1,000's)											
SINGLE-FAMILY	307	296	302	284	281	268	253	248	231	0	0	0
TOWNHOUSE	199	177	183	173	182	168	178	151	149	0	0	0
CONDO	216	318	271	206	205	171	189	172	147	0	0	0
MANUFACTURED	126	105	105	131	128	106	104	110	123	0	0	0
MULTI-FAMILY	376	343	327	344	260	239	237	241	206	0	0	0
LAND	314	427	181	222	153	313	250	176	145	0	0	0



The data is deemed reliable but not guaranteed and is Subject to errors, omissions or revisions and is not warranted.