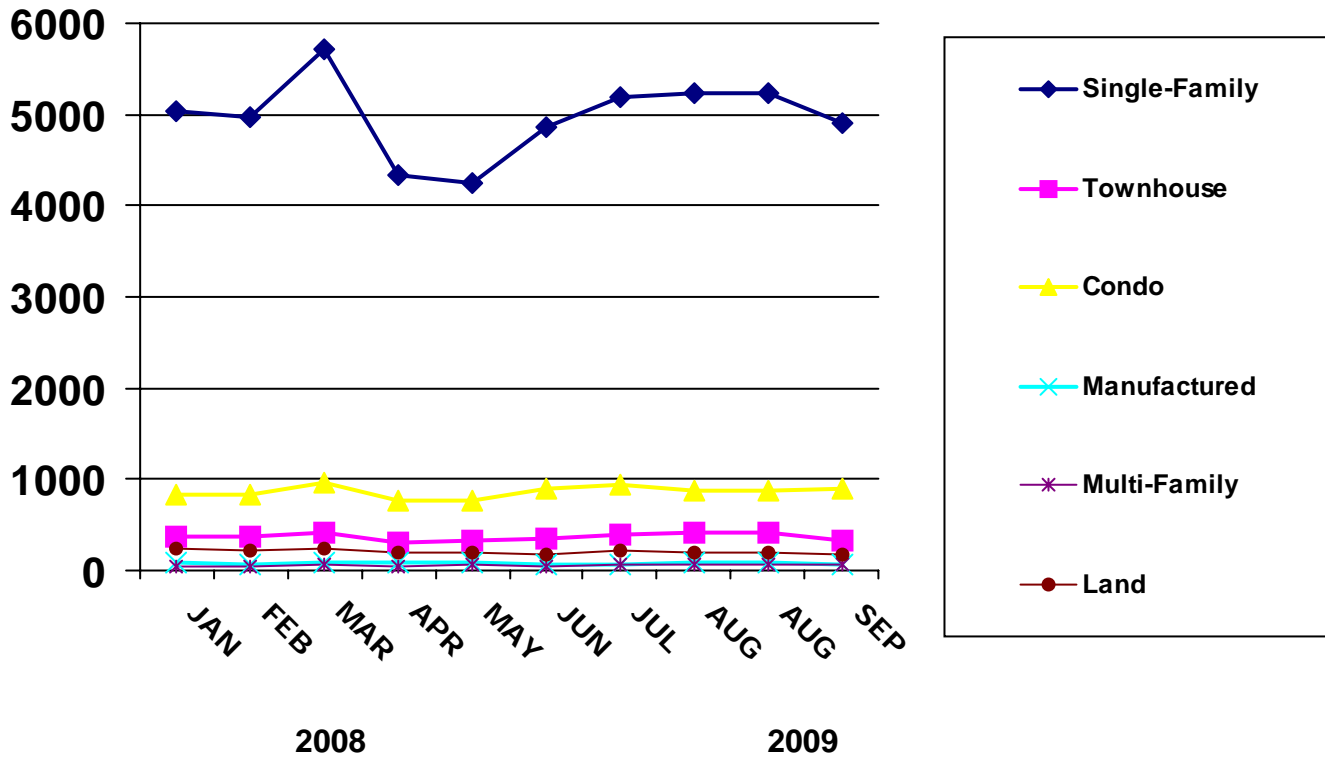




# NEW LISTINGS BY MONTH



PROPERTY TYPE	JAN	FEB	MAR	APR	MAY	JUN	JUL	AUG	SEP	OCT	NOV	DEC
<b>2007 - Number of Units</b>												
SINGLE-FAMILY	5826	5198	6141	5568	5776	5500	5738	5798	4754	5210	4107	3421
TOWNHOUSE	468	421	520	472	442	433	447	390	351	377	327	238
CONDO	1040	1025	1083	893	996	841	836	916	819	763	671	488
MANUFACTURED	153	120	144	143	137	120	111	123	91	96	68	47
MULTI-FAMILY	84	75	79	90	108	73	83	79	75	79	59	40
LAND	576	500	497	512	443	414	377	507	414	397	287	231
<b>2008 - Number of Units</b>												
SINGLE-FAMILY	5021	4825	4866	5142	5201	5335	5497	5285	5363	5555	4606	4607
TOWNHOUSE	309	306	366	339	299	330	344	333	351	375	344	325
CONDO	747	662	680	778	762	810	774	784	764	866	695	766
MANUFACTURED	99	103	101	97	97	84	96	81	97	93	69	84
MULTI-FAMILY	66	53	55	44	54	60	50	46	55	57	49	57
LAND	450	376	322	353	340	296	303	295	323	280	185	147
<b>2009 - Number of Units</b>												
SINGLE-FAMILY	5040	4979	5709	4333	4257	4860	5182	5230	4907	0	0	0
TOWNHOUSE	377	377	416	315	326	354	400	412	336	0	0	0
CONDO	842	832	963	772	775	887	952	884	896	0	0	0
MANUFACTURED	94	72	82	80	87	67	72	89	62	0	0	0
MULTI-FAMILY	40	40	61	34	67	48	57	58	57	0	0	0
LAND	248	214	239	196	187	171	214	205	167	0	0	0

