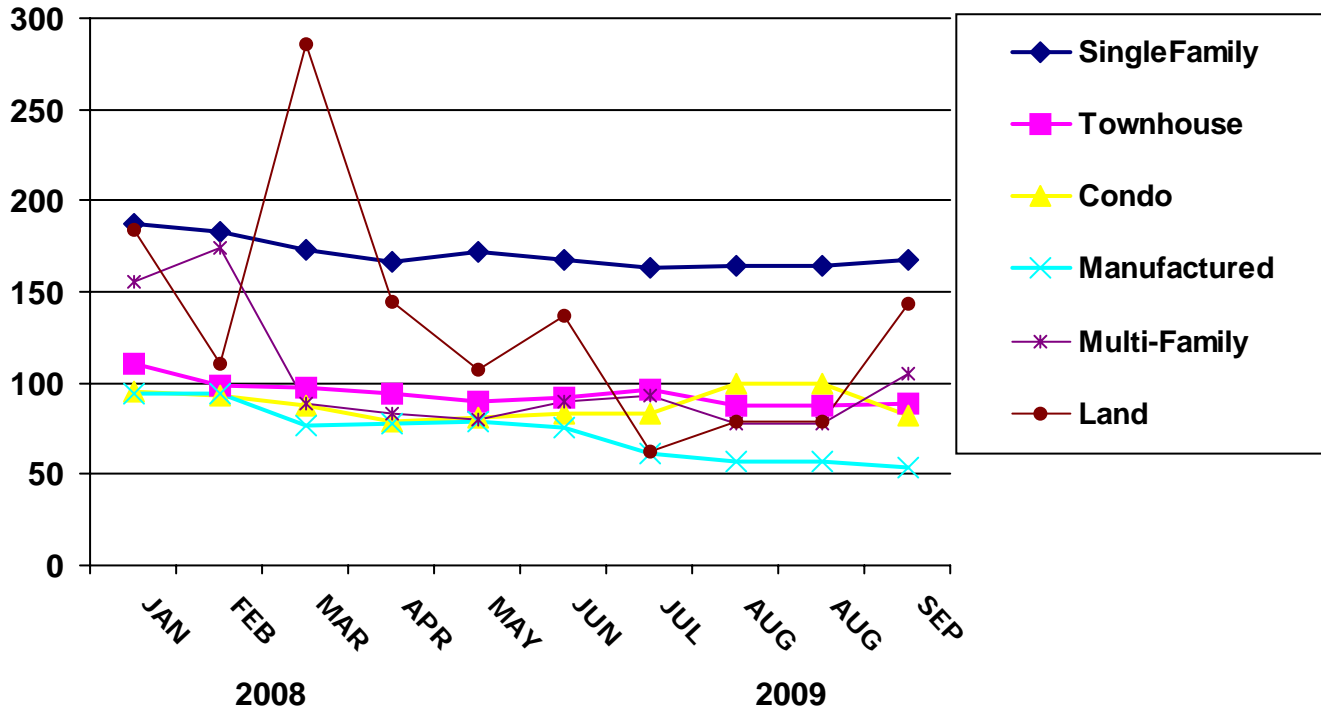




AVERAGE SALE PRICE BY MONTH



PROPERTY TYPE	JAN	FEB	MAR	APR	MAY	JUN	JUL	AUG	SEP	OCT	NOV	DEC
	2007 (in \$1,000's)											
SINGLE-FAMILY	373	379	379	387	389	377	375	381	351	373	347	318
TOWNHOUSE	224	239	233	245	227	224	223	216	202	210	214	210
CONDO	246	256	235	271	255	230	235	232	228	239	211	253
MANUFACTURED	158	135	146	140	160	147	137	158	145	117	165	142
MULTI-FAMILY	345	358	409	459	410	393	387	387	425	408	455	289
LAND	277	287	291	336	307	344	488	350	329	265	336	213
	2008 (in \$1,000's)											
SINGLE-FAMILY	307	296	302	284	281	268	253	248	231	225	216	204
TOWNHOUSE	199	177	183	173	182	168	178	151	149	129	125	111
CONDO	216	318	271	206	205	171	189	170	146	133	93	115
MANUFACTURED	126	105	105	131	128	106	104	110	123	114	112	85
MULTI-FAMILY	376	343	327	344	260	239	237	241	206	198	198	132
LAND	314	427	181	222	153	313	250	176	145	123	121	184
	2009 (in \$1,000's)											
SINGLE-FAMILY	187	182	173	166	172	168	163	165	168	0	0	0
TOWNHOUSE	111	99	97	94	90	92	96	87	88	0	0	0
CONDO	95	93	88	79	81	83	83	100	82	0	0	0
MANUFACTURED	94	94	77	78	79	75	61	57	54	0	0	0
MULTI-FAMILY	155	174	88	83	79	90	93	78	106	0	0	0
LAND	184	111	286	144	108	137	63	79	143	0	0	0

