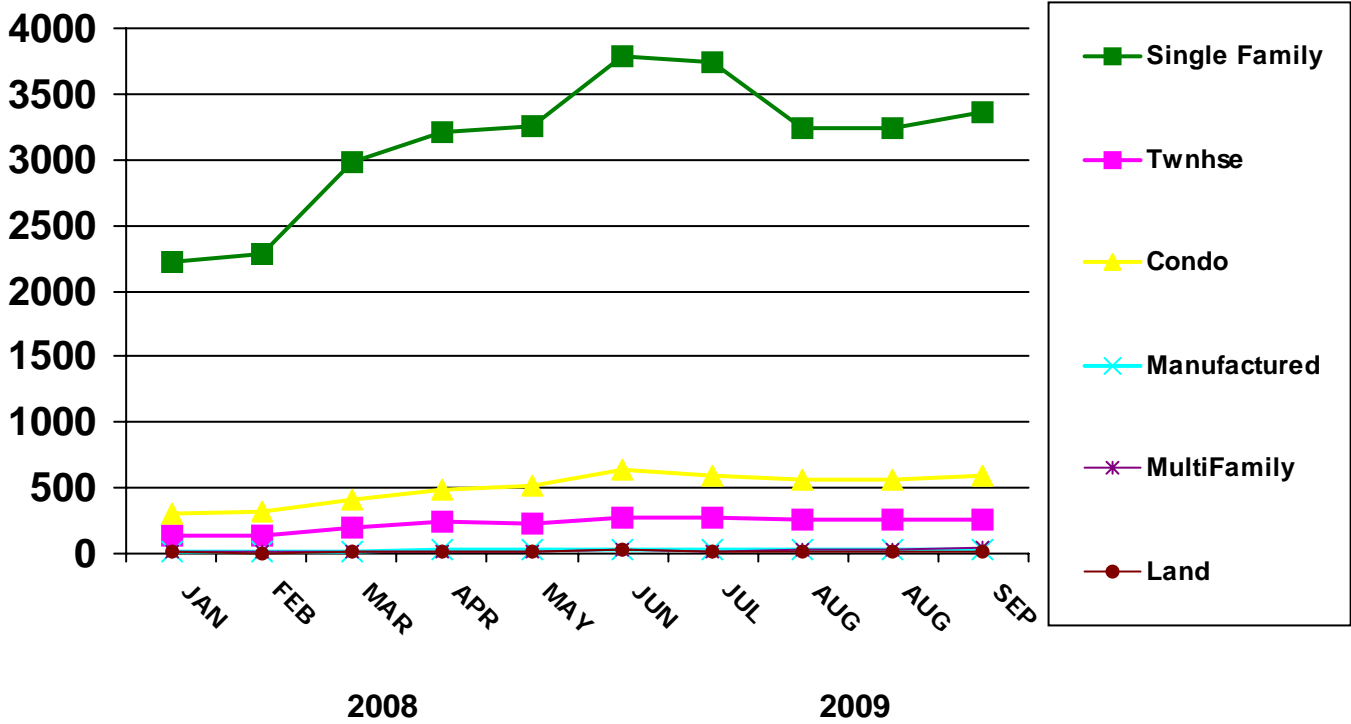




# SOLD LISTINGS BY MONTH



PROPERTY TYPE	JAN	FEB	MAR	APR	MAY	JUN	JUL	AUG	SEP	OCT	NOV	DEC
<b>2007 - Number of Units</b>												
SINGLE-FAMILY	373	379	379	387	389	377	375	381	351	373	347	318
TOWNHOUSE	224	239	233	245	227	224	223	216	202	210	214	210
CONDO	246	256	235	271	255	230	235	232	228	239	211	253
MANUFACTURED	158	135	146	140	160	147	137	158	145	117	165	142
MULTI-FAMILY	345	358	409	459	410	393	387	387	425	408	455	289
LAND	277	287	291	336	307	344	488	350	329	265	336	213
<b>2008 - Number of Units</b>												
SINGLE-FAMILY	1043	1196	1601	1884	2208	2346	2731	2550	2788	2721	2186	2503
TOWNHOUSE	66	71	93	102	117	117	129	133	145	141	136	155
CONDO	106	114	119	127	170	204	242	251	241	273	256	301
MANUFACTURED	26	16	14	31	29	16	26	19	22	26	13	10
MULTI-FAMILY	5	3	6	7	5	7	7	6	9	6	9	5
LAND	29	28	37	39	33	23	25	18	22	20	16	13
<b>2009 - Number of Units</b>												
SINGLE-FAMILY	2226	2287	2980	3205	3262	3784	3739	3233	3360	0	0	0
TOWNHOUSE	134	130	200	242	225	279	280	260	263	0	0	0
CONDO	304	312	406	486	510	639	586	556	596	0	0	0
MANUFACTURED	18	20	22	29	23	30	33	34	38	0	0	0
MULTI-FAMILY	11	12	21	14	19	30	19	29	43	0	0	0
LAND	16	6	11	12	14	27	14	15	14	0	0	0

