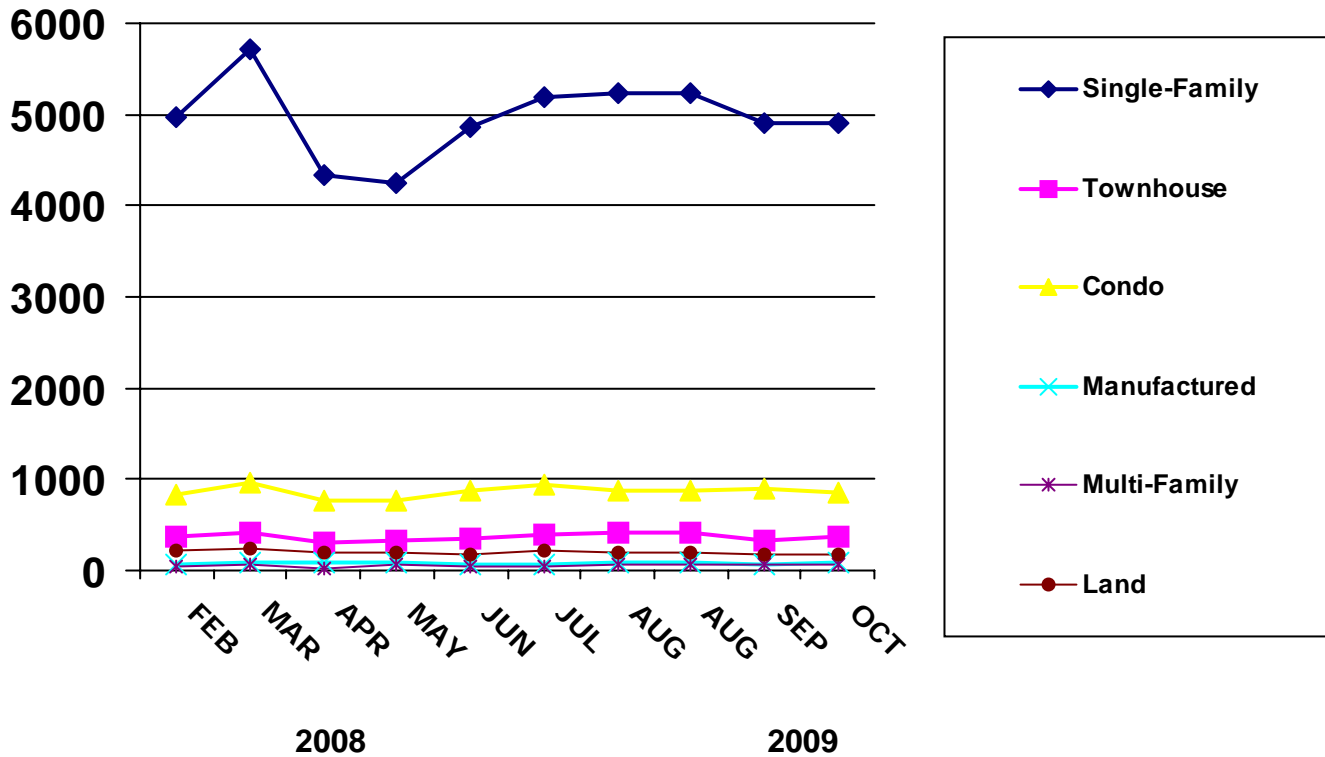




NEW LISTINGS BY MONTH



PROPERTY TYPE	JAN	FEB	MAR	APR	MAY	JUN	JUL	AUG	SEP	OCT	NOV	DEC
2007 - Number of Units												
SINGLE-FAMILY	5826	5198	6141	5568	5776	5500	5738	5797	4754	5210	4107	3420
TOWNHOUSE	468	421	520	472	442	433	447	390	351	377	327	238
CONDO	1040	1025	1083	893	996	841	836	916	819	763	671	488
MANUFACTURED	153	120	144	143	137	120	111	123	91	96	67	47
MULTI-FAMILY	84	75	79	90	108	73	83	79	75	79	59	40
LAND	576	500	497	512	443	414	377	507	414	397	287	231
2008 - Number of Units												
SINGLE-FAMILY	5021	4826	4864	5141	5199	5335	5497	5281	5361	5549	4603	4607
TOWNHOUSE	309	306	366	339	299	330	344	333	351	375	344	325
CONDO	748	662	680	778	762	810	775	784	764	865	695	765
MANUFACTURED	99	103	101	97	97	84	96	81	97	93	69	84
MULTI-FAMILY	66	53	55	44	53	60	50	46	55	57	49	57
LAND	450	376	322	353	340	296	303	295	323	280	185	147
2009 - Number of Units												
SINGLE-FAMILY	5042	4981	5710	4344	4255	4858	5179	5224	4912	4908	0	0
TOWNHOUSE	377	377	415	315	324	353	400	412	338	367	0	0
CONDO	841	829	961	771	773	883	946	878	896	852	0	0
MANUFACTURED	94	72	82	80	87	67	73	92	64	77	0	0
MULTI-FAMILY	40	40	61	31	66	48	54	58	57	70	0	0
LAND	247	214	239	196	187	171	214	205	167	168	0	0

