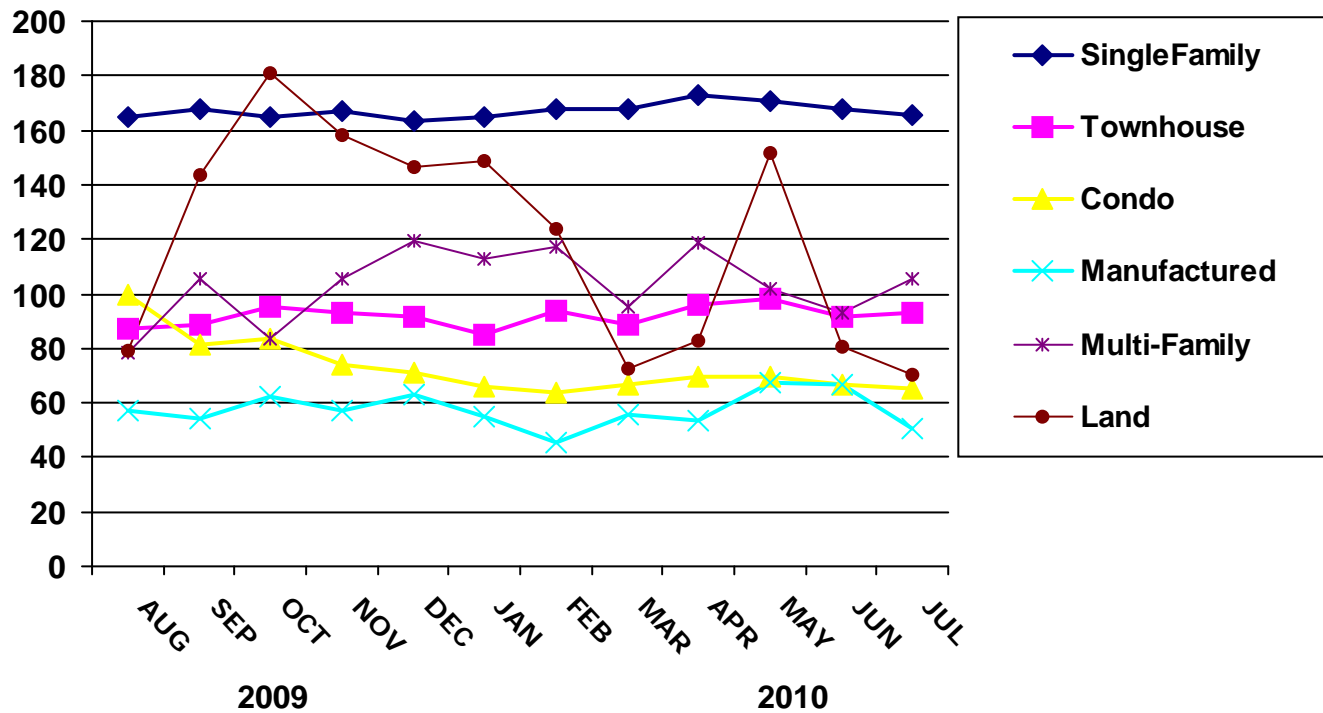




AVERAGE SALE PRICE BY MONTH



PROPERTY TYPE	JAN	FEB	MAR	APR	MAY	JUN	JUL	AUG	SEP	OCT	NOV	DEC
	2008 (in \$1,000's)											
SINGLE-FAMILY	307	296	302	284	281	268	253	248	231	225	216	204
TOWNHOUSE	199	177	183	173	182	168	178	151	149	129	125	111
CONDO	216	318	271	206	205	171	189	170	146	133	93	115
MANUFACTURED	126	105	105	131	128	106	104	110	123	114	112	85
MULTI-FAMILY	376	343	327	344	260	239	237	243	206	198	198	132
LAND	314	427	181	222	153	313	250	176	145	123	121	184
HIGH RISE	0	0	0	0	0	0	0	240	245	285	1,175	277
	2009 (in \$1,000's)											
SINGLE-FAMILY	187	182	173	166	172	168	163	165	168	165	167	163
TOWNHOUSE	111	99	97	94	90	92	96	87	88	95	93	91
CONDO	95	93	88	79	81	83	83	100	81	84	74	71
MANUFACTURED	94	94	77	78	79	75	61	57	54	62	57	63
MULTI-FAMILY	155	174	88	83	79	90	93	78	106	84	106	119
LAND	184	111	286	144	108	137	63	79	143	181	158	147
HIGH RISE	0	506	399	348	324	391	795	1,006	254	303	224	240
	2010 (in \$1,000's)											
SINGLE-FAMILY	165	168	168	173	170	168	165	0	0	0	0	0
TOWNHOUSE	85	94	89	96	98	92	93	0	0	0	0	0
CONDO	66	64	67	69	70	67	65	0	0	0	0	0
MANUFACTURED	55	46	56	53	68	66	50	0	0	0	0	0
MULTI-FAMILY	113	117	95	119	102	93	106	0	0	0	0	0
LAND	149	124	73	83	151	80	70	0	0	0	0	0
HIGH RISE	285	213	261	199	204	237	282	0	0	0	0	0



The data is deemed reliable but not guaranteed and is Subject to errors, omissions or revisions and is not warranted.