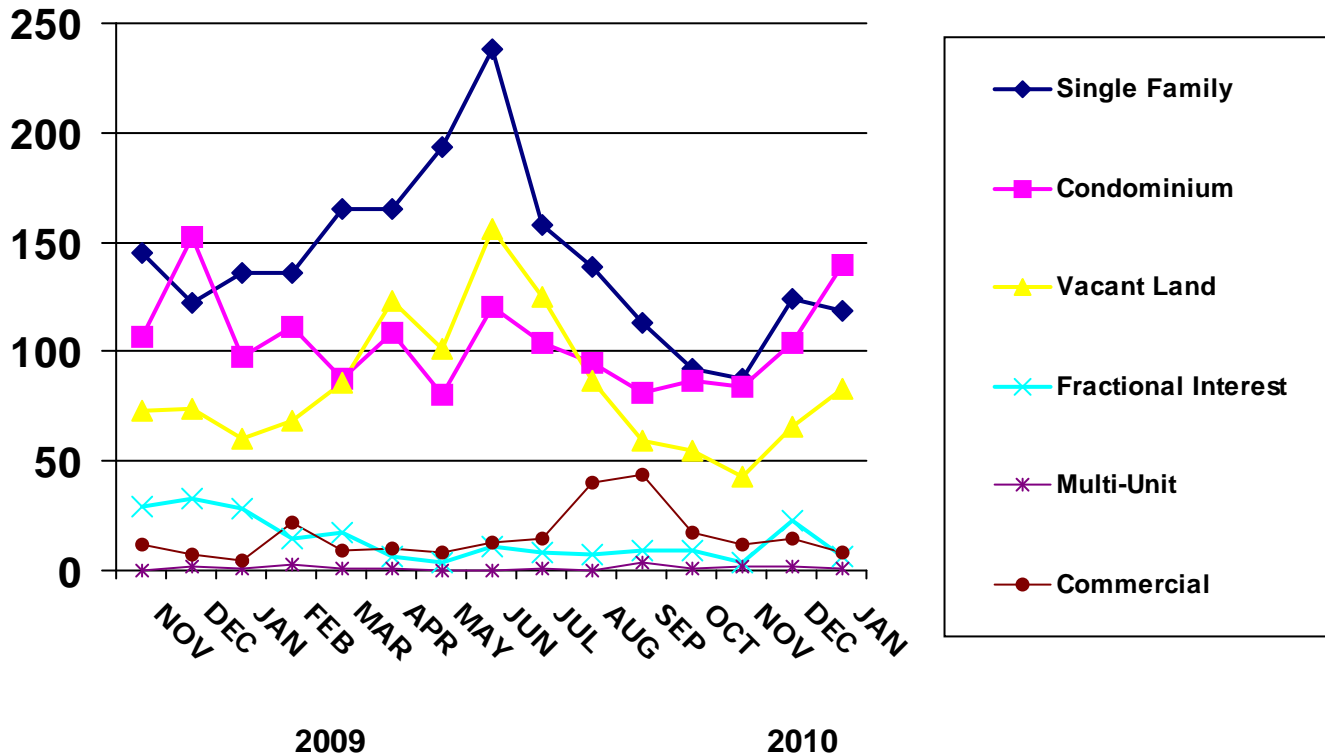


NEW LISTINGS BY MONTH



PROPERTY TYPE	JAN	FEB	MAR	APR	MAY	JUN	JUL	AUG	SEP	OCT	NOV	DEC
2010 - Number of Units												
SINGLE FAMILY	119	0	0	0	0	0	0	0	0	0	0	0
CONDOMINIUM	140	0	0	0	0	0	0	0	0	0	0	0
VACANT LAND	83	0	0	0	0	0	0	0	0	0	0	0
FRACTIONAL INTEREST	6	0	0	0	0	0	0	0	0	0	0	0
MULTI-UNIT	1	0	0	0	0	0	0	0	0	0	0	0
COMMERCIAL	8	0	0	0	0	0	0	0	0	0	0	0
2009 - Number of Units												
SINGLE FAMILY	136	136	165	165	193	238	158	139	113	92	88	124
CONDOMINIUM	98	111	88	109	80	120	104	95	81	87	84	104
VACANT LAND	60	68	86	123	101	156	125	87	59	55	43	66
FRACTIONAL INTEREST	28	15	17	6	4	11	8	7	9	9	4	23
MULTI-UNIT	1	3	1	1	0	0	1	0	4	1	2	2
COMMERCIAL	5	22	9	10	8	13	15	40	44	17	12	15
2008 - Number of Units												
SINGLE FAMILY	164	151	199	222	265	261	236	185	184	152	145	122
CONDOMINIUM	136	192	114	101	123	125	153	101	106	105	107	152
VACANT LAND	137	99	159	157	226	180	128	95	105	99	73	74
FRACTIONAL INTEREST	48	13	17	40	9	18	15	23	24	20	29	33
MULTI-UNIT	0	1	1	1	4	3	2	0	1	1	0	2
COMMERCIAL	34	4	11	9	11	14	13	10	12	13	12	7