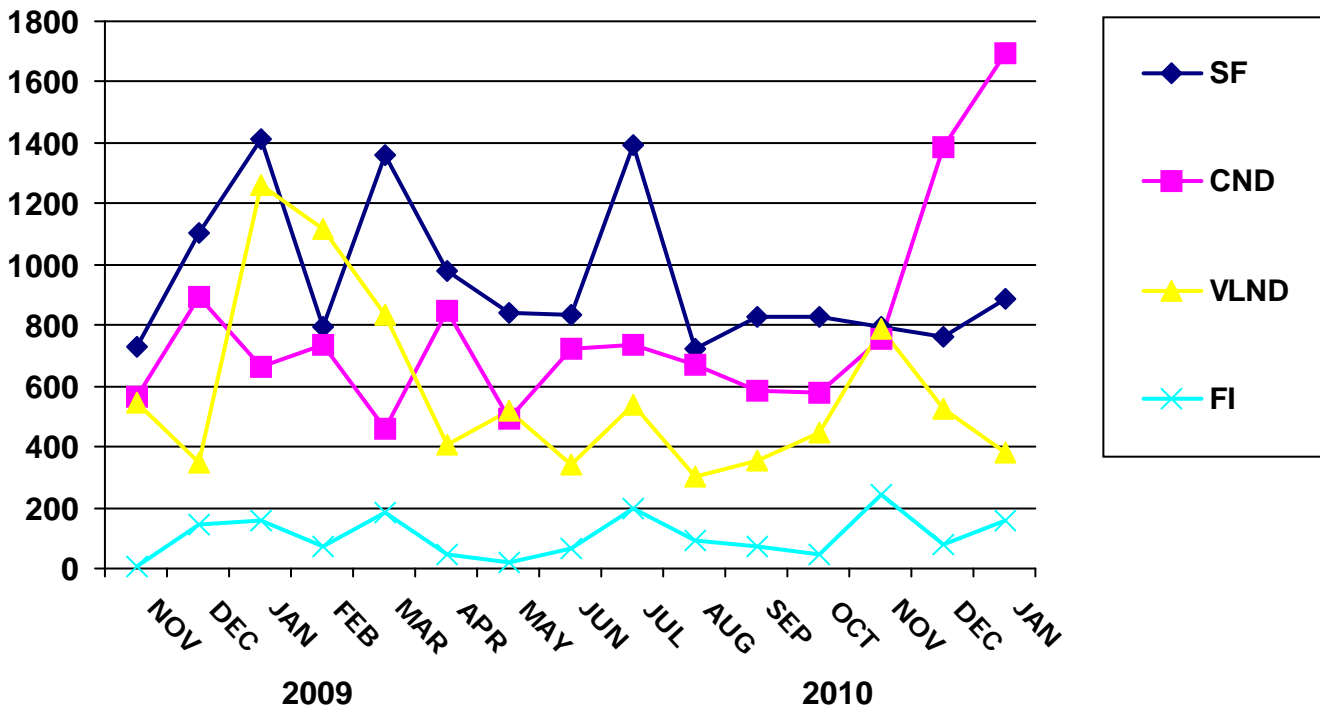


AVERAGE SALE PRICE BY MONTH



PROPERTY TYPE	JAN	FEB	MAR	APR	MAY	JUN	JUL	AUG	SEP	OCT	NOV	DEC
	2010 (in \$1,000's)											
Single Family	888	0	0	0	0	0	0	0	0	0	0	0
Condominium	1,696	0	0	0	0	0	0	0	0	0	0	0
Vacant Land	382	0	0	0	0	0	0	0	0	0	0	0
Fractional Interest	155	0	0	0	0	0	0	0	0	0	0	0
Commercial	0	0	0	0	0	0	0	0	0	0	0	0
	2009 (in \$1,000's)											
Single Family	1,410	795	1,362	976	839	836	1,392	722	828	830	794	763
Condominium	664	735	462	850	493	721	734	672	582	581	753	1,387
Vacant Land	1,259	1,117	834	410	521	340	537	302	355	445	788	524
Fractional Interest	159	70	181	45	18	67	194	94	75	44	241	82
Multi-Unit	900	0	0	0	0	0	0	0	0	0	0	0
Commercial	335	0	0	0	600	213	105	0	0	0	4	3
	2008 (in \$1,000's)											
Single Family	1,312	1,193	888	1,370	774	875	836	1,038	929	680	731	1,105
Condominium	798	1,000	828	921	916	1,159	646	558	687	622	566	891
Vacant Land	645	733	1,103	578	409	494	362	347	428	282	546	348
Fractional Interest	211	202	192	175	47	344	117	24	133	92	4	145
Multi-Unit	0	0	0	0	0	0	0	200	0	0	0	0
Commercial	0	1	821	51	0	3,500	12	1,370	1	20	517	651