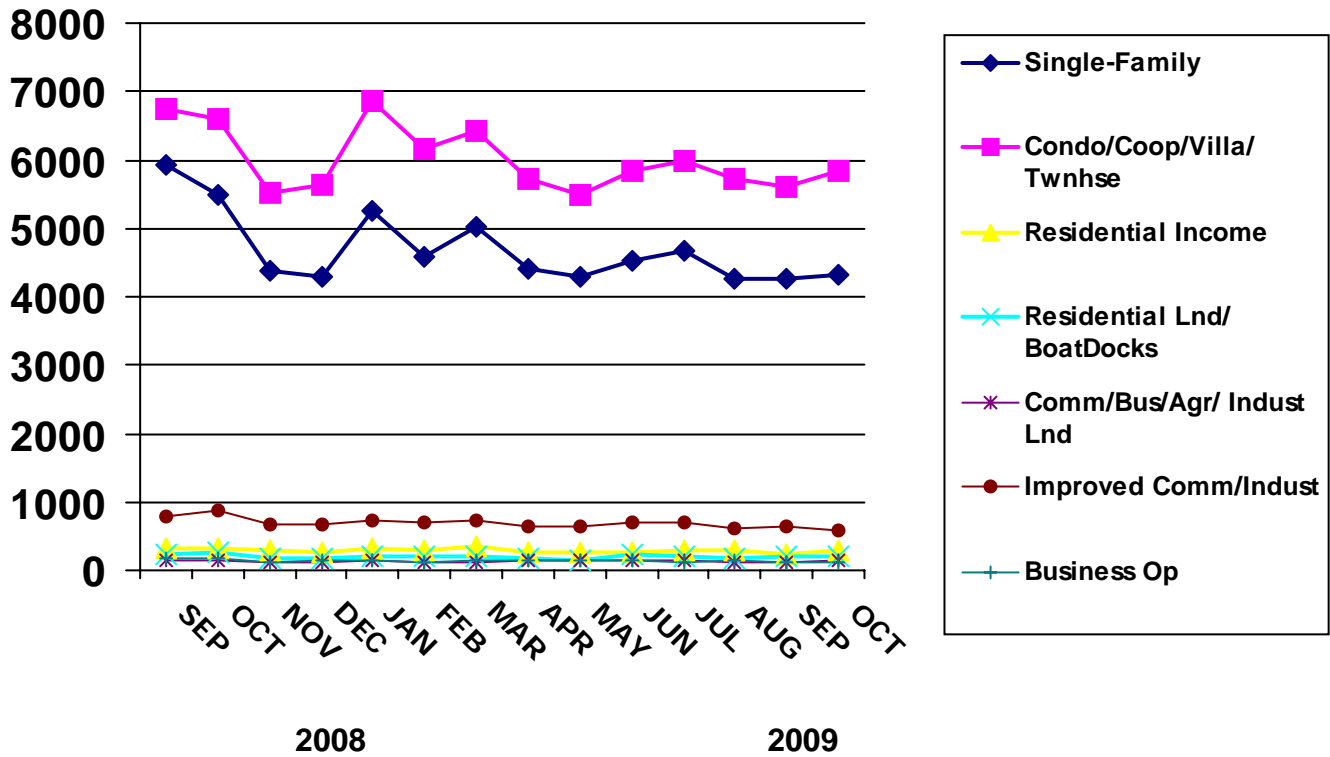




Proud Member of the REALTOR® Association of Greater Miami and the Beaches

# NEW LISTINGS BY MONTH



**2008 - Number of Units**

PROPERTY TYPE	JAN	FEB	MAR	APR	MAY	JUN	JUL	AUG	SEP	OCT	NOV	DEC
SINGLE-FAMILY	5151	4465	4737	4971	5483	6017	5913	5696	5926	5492	4379	4305
CONDO/COOP/VILLA/ TWNHSE	6149	5271	5292	5482	6266	6619	6957	6494	6749	6592	5528	5642
RESIDENTIAL INCOME	290	235	345	392	380	385	372	333	335	323	304	266
RESIDENTIAL LAND/ BOATDOCK	283	254	188	181	257	260	247	248	245	262	173	179
COMM/BUS/AGR/INDUST LAND	97	94	77	79	146	127	132	115	153	132	127	107
IMPROVED COMM/INDUST	561	533	461	600	616	787	772	747	798	885	657	668
BUSINESS OPPORTUNITY	154	110	106	130	145	166	180	159	175	167	120	136

**2009 - Number of Units**

SINGLE-FAMILY	5241	4580	5032	4402	4290	4523	4678	4273	4275	4335	0	0
CONDO/COOP/VILLA/ TWNHSE	6856	6167	6427	5736	5484	5847	5971	5711	5608	5843	0	0
RESIDENTIAL INCOME	323	291	349	272	275	267	295	292	245	293	0	0
RESIDENTIAL LAND/ BOATDOCK	211	209	212	185	158	237	214	165	206	204	0	0
COMM/BUS/AGR/INDUST LAND	152	122	123	152	134	138	145	123	129	137	0	0
IMPROVED COMM/INDUST	723	710	717	647	643	698	714	606	637	588	0	0
BUSINESS OPPORTUNITY	146	124	156	143	143	139	115	142	125	119	0	0



Real Property information used to create these statistical reports is maintained and compiled by First American MLS Solutions, entered by Realtor® members participating in a shared data base by agreement. This report was compiled early November, additional sales for the month of October may not yet have been recorded. This information is provided as a benefit of MLS participation at RAMB and is believed accurate but not warranted.