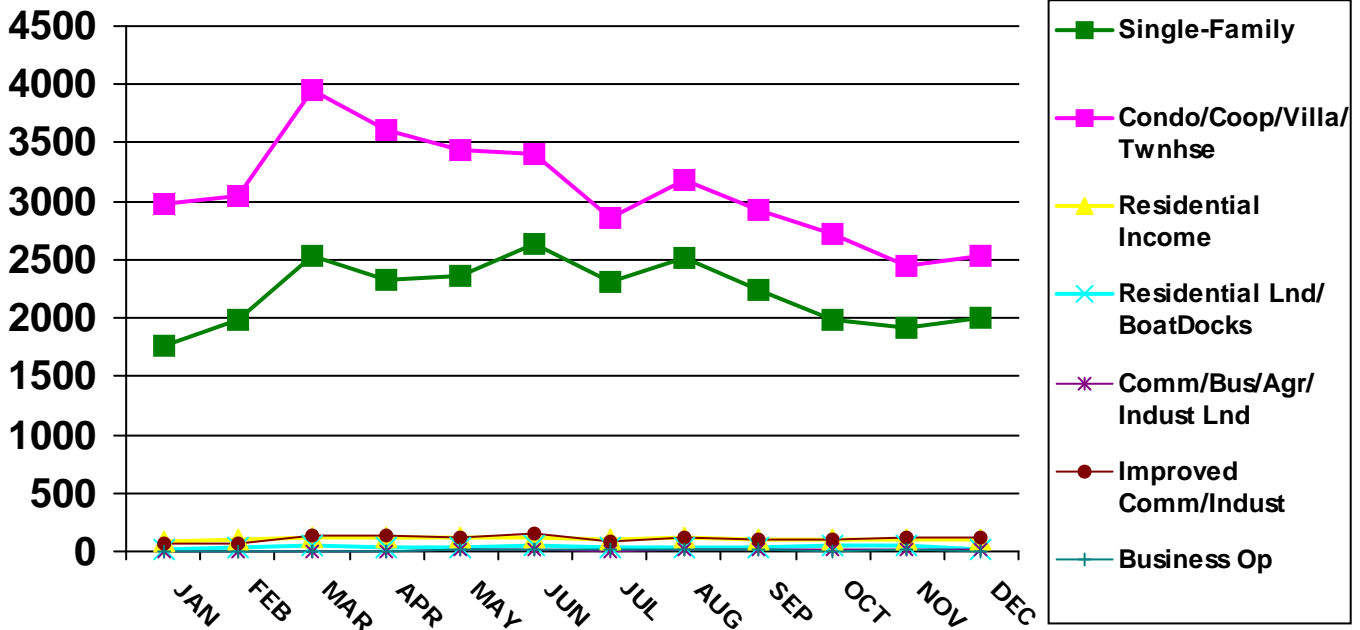




SOLD LISTINGS BY MONTH



2010

2011

2010 - Number of Units

PROPERTY TYPE	JAN	FEB	MAR	APR	MAY	JUN	JUL	AUG	SEP	OCT	NOV	DEC
Single-Family	1528	1631	2224	2252	2169	2530	2150	2198	2083	1870	1778	2342
Condo/Coop/Villa/Townhouse	2115	2288	3078	3021	2821	3109	2678	2826	2863	2530	2601	3323
Residential Income	81	64	93	116	118	115	125	135	108	95	81	146
Residential Land/ BoatDocks	15	13	33	27	28	32	16	36	29	29	25	40
Comm/ Bus/ Agr/ Indust Land	1	4	13	9	12	21	6	3	6	4	12	12
Improved Comm/Indust	67	79	101	119	113	122	99	94	112	76	91	109
Business Opportunity	5	9	13	5	6	7	6	6	10	9	9	8

2011 - Number of Units

SINGLE-FAMILY	1770	1984	2534	2321	2360	2638	2310	2515	2235	1991	1921	2003
CONDO/COOP/VILLA/ TWNHSE	2970	3041	3956	3609	3447	3402	2853	3185	2928	2715	2451	2533
RESIDENTIAL INCOME	94	102	121	123	128	123	100	115	110	99	108	108
RESIDENTIAL LAND/ BOATDOCK	23	31	50	32	39	45	41	38	42	48	47	22
COMM/BUS/AGR/INDUST LAND	4	8	7	5	15	15	6	12	9	10	16	17
IMPROVED COMM/INDUST	69	74	136	129	113	150	91	126	110	101	120	118
BUSINESS OPPORTUNITY	7	7	5	7	10	12	12	13	18	7	15	1

