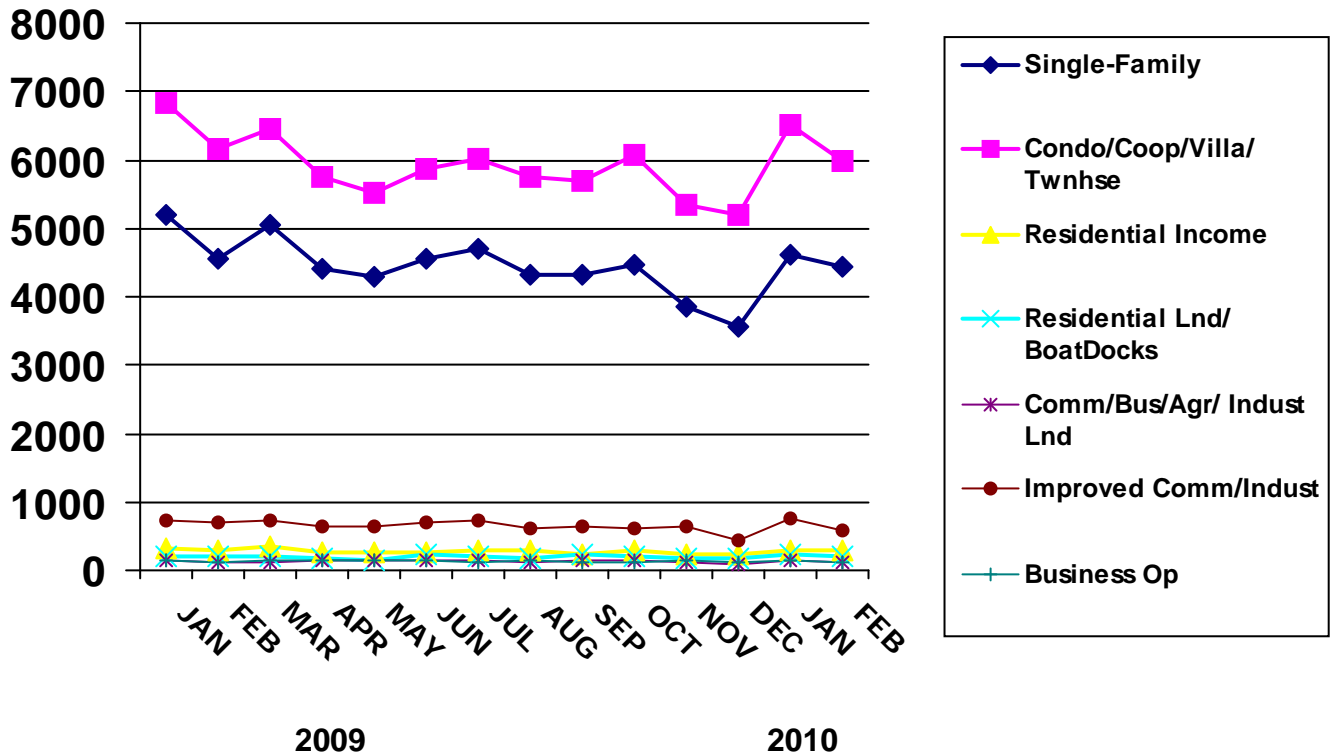




NEW LISTINGS BY MONTH



2009 - Number of Units

PROPERTY TYPE	JAN	FEB	MAR	APR	MAY	JUN	JUL	AUG	SEP	OCT	NOV	DEC
SINGLE-FAMILY	5206	4569	5047	4423	4303	4547	4701	4335	4335	4460	3854	3550
CONDO/COOP/VILLA/ TWNHSE	6827	6160	6441	5757	5517	5879	6026	5748	5705	6075	5343	5203
RESIDENTIAL INCOME	323	292	349	272	277	267	297	296	246	300	248	241
RESIDENTIAL LAND/ BOATDOCK	209	209	211	189	159	238	218	178	228	212	182	161
COMM/BUS/AGR/INDUST LAND	149	122	121	152	135	142	147	124	135	146	131	85
IMPROVED COMM/INDUST	721	708	716	648	642	699	717	611	645	620	642	424
BUSINESS OPPORTUNITY	143	122	158	144	143	139	116	143	126	127	132	104

2010 - Number of Units

SINGLE-FAMILY	4623	4438	0	0	0	0	0	0	0	0	0	0
CONDO/COOP/VILLA/ TWNHSE	6518	5987	0	0	0	0	0	0	0	0	0	0
RESIDENTIAL INCOME	302	282	0	0	0	0	0	0	0	0	0	0
RESIDENTIAL LAND/ BOATDOCK	221	211	0	0	0	0	0	0	0	0	0	0
COMM/BUS/AGR/INDUST LAND	142	116	0	0	0	0	0	0	0	0	0	0
IMPROVED COMM/INDUST	768	588	0	0	0	0	0	0	0	0	0	0
BUSINESS OPPORTUNITY	137	108	0	0	0	0	0	0	0	0	0	0

